

# MOTOSURF A3100 Plug-In Software Skin Development Release Notes

## System Requirements

In order to run the MOTOSURF A3100 Plug-In, the system must have the following software installed:

- Windows 2000 Professional (Service Pack 4) or Windows XP (Service Pack 2);
- Microsoft Visual Studio 2005 standard edition, or higher, with smart device development;
- Windows Mobile 6 Professional Refresh installed.

## Installing MOTOSURF A3100

Double click on MOTOSURF A3100 executable file. The welcome screen should appear to the user, Figure 1;  
Click on Next button.



Figure 1 – MOTOSURF A3100 welcome screen.

Click on Next button on MOTOSURF A3100 warning screen (Figure 2).

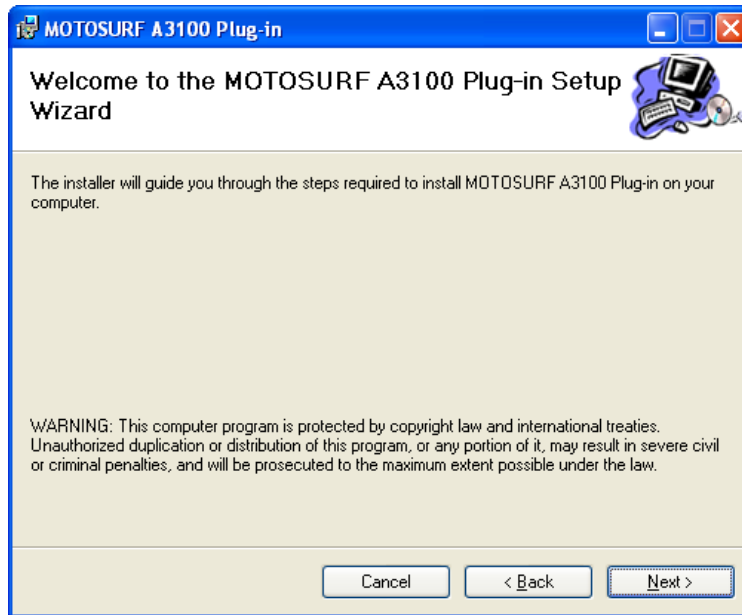


Figure 2 – MOTOSURF A3100 warning screen.

Read the end user license agreement, select accept radio button and press next (Figure 3).

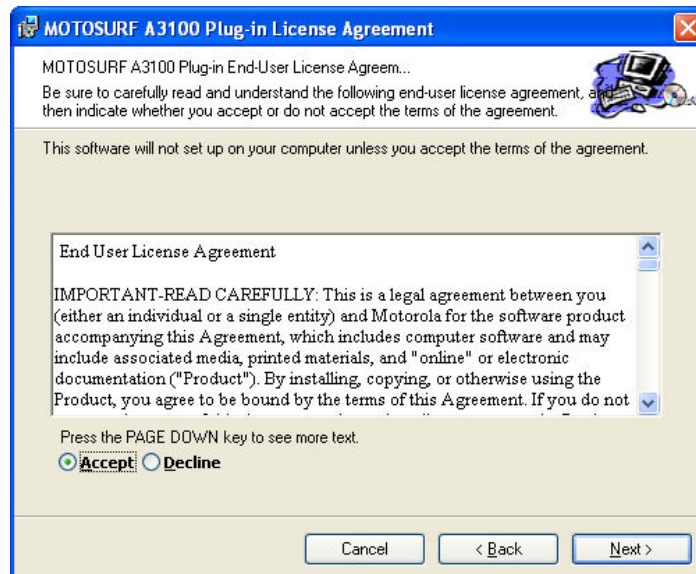


Figure 3 – MOTOSURF A3100 end user license agreement.

Click on next again to confirm the MOTOSURF A3100 installation (Figure 4).

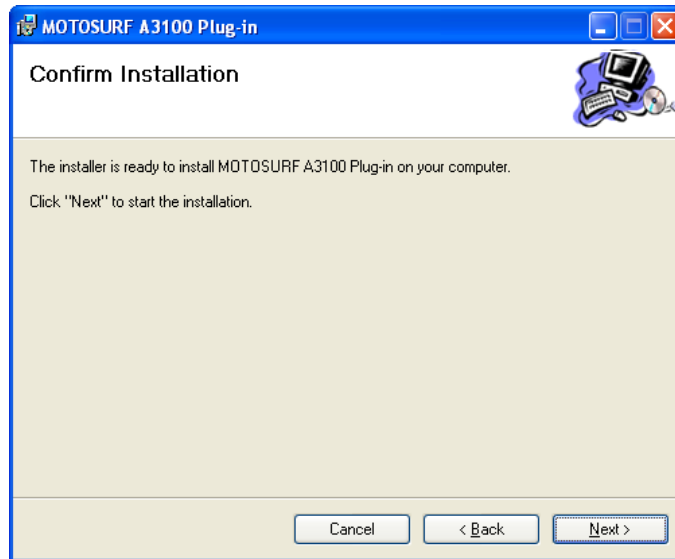


Figure 4 – MOTOSURF A3100 install screen.

The MOTOSURF A3100 installation can take some time, wait until it ends. And click on close on the next window.

The MOTOSURF A3100 installation is complete.

## Starting MOTOSURF A3100 Skin

Start Device Emulator Manager on Microsoft Visual Studio. For Visual Studio 2005 go to option Tools -> Device Emulator Manager.

In the list that appears, Figure 5, right click on MOTOSURF A3100 and press connect.

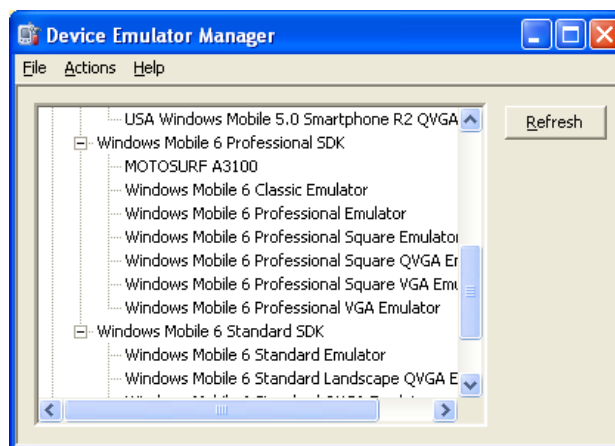


Figure 5 – Device Emulator Manager List